

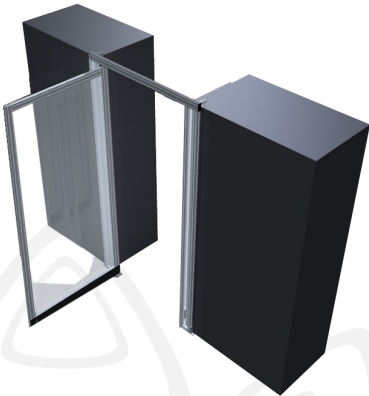


Single Pivot Door



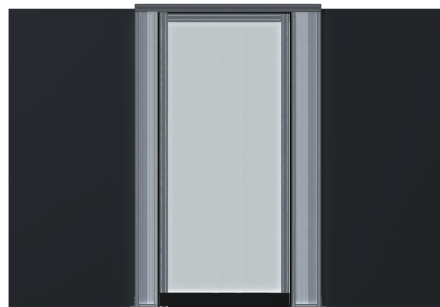
Standard Features

- Custom width for precise fit to most any opening
- Double acting spring with adjustable tension
- Sturdy aluminum frame
- Doors hold open at 85°
- Fire rated clear paneling
- Tight tolerances



Custom Options

- Solid bottom panel
- Cart bar
- Custom colors
- Aluminum handles
- Custom logo



***Custom
designed
and built
specifically
to the
constraints of
your installation***

Technical Data

Single Pivot Door



Standard Specifications *

Size and Finish <small>* Custom sized doors available upon request</small>	
Fits Aisle openings	40" to 95 ⁵ / ₈ "
Total Height	Up to 98"
Pass Through Height	Up to 96 ⁷ / ₈ "
Total Width	Up to 96"
Pass Through Width	29 "
Profile Width	1 ³ / ₁₆
Standard Finish	Satin Anodize (Clear)
Upgrade Finish	Custom Anodize and Powder Coat Colors
Door & Frame	
Material	6560 T-6 Temper Aluminum
Tensile Strength	30,000 psi
Paneling - Lexan (High Optic Polycarbonate)	
Material	Polycarbonate
Color	Clear
Odor	Odorless
Thickness	4.5 mm
Self-ignition Temperature:	650°F
Meets or exceeds ASTM E84	

