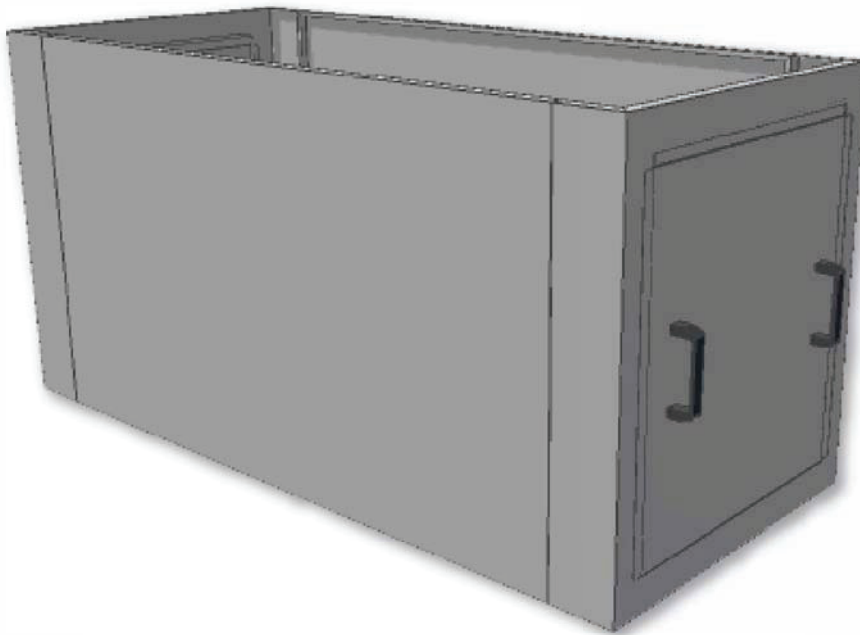




CRAC Extensions - WC5300

The TRIAD CRAC extension provides ease of installation while controlling the hot air flowing through the AC unit.

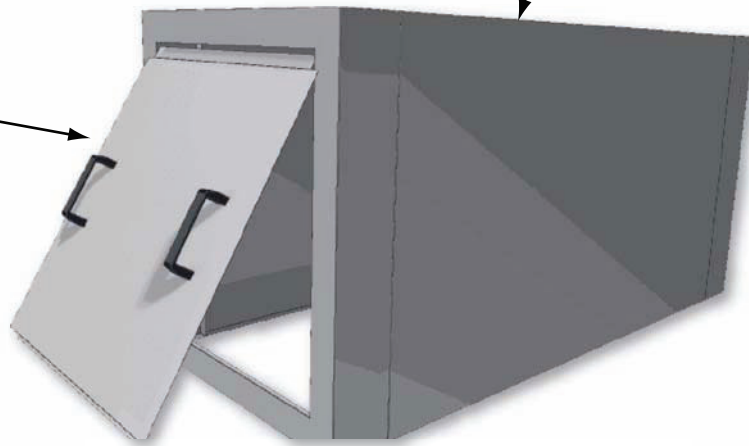


Custom sized to match CRAC unit

Can be stacked to reach desired height

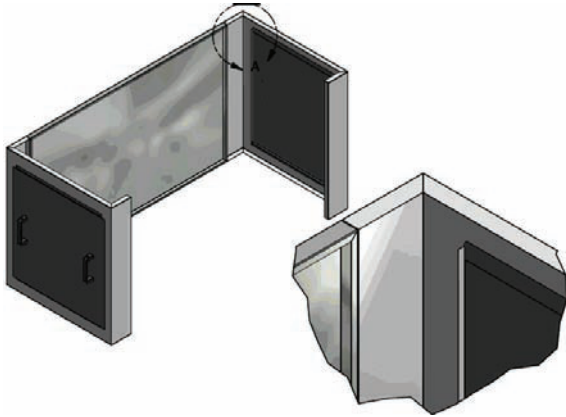
Access door on both ends

Installation kit included





Technical Specifications



Shell:

Material	22 gauge steel
Color	Standard White
	Custom colors available
Size (typical)	32" deep X 72" long X 36" height
	Custom made to fit CRAC unit
Weight (for typical size)	Approximately 100 lbs
Shipping	Ships as a prepackaged kit

Additional option: No door

